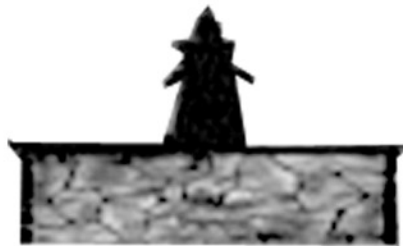
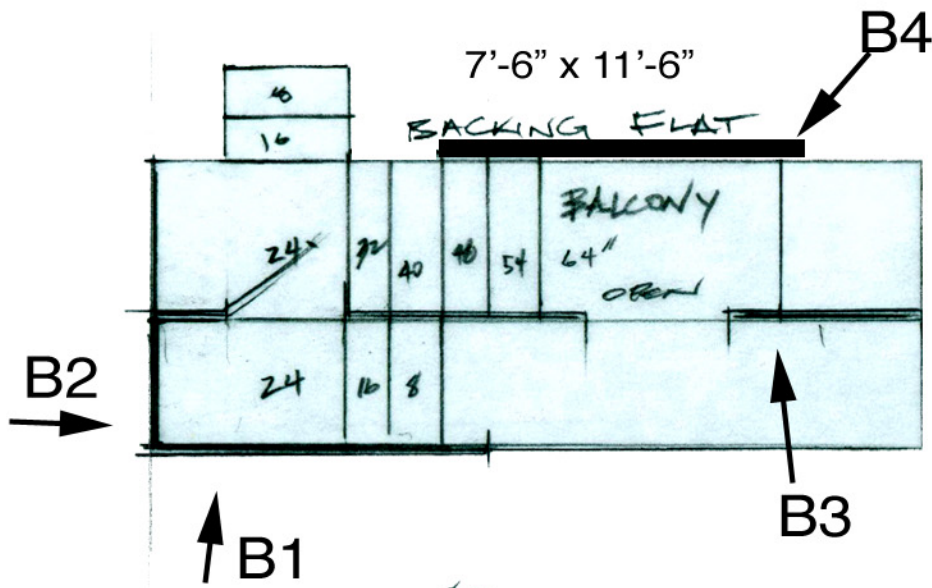


Discuss how to construct B3 to avoid profiling for the steps and +24" landing.

Consider using vintage stagebraces to support the facing flat but keep open a pathway for the actors to make their entrances. Discuss

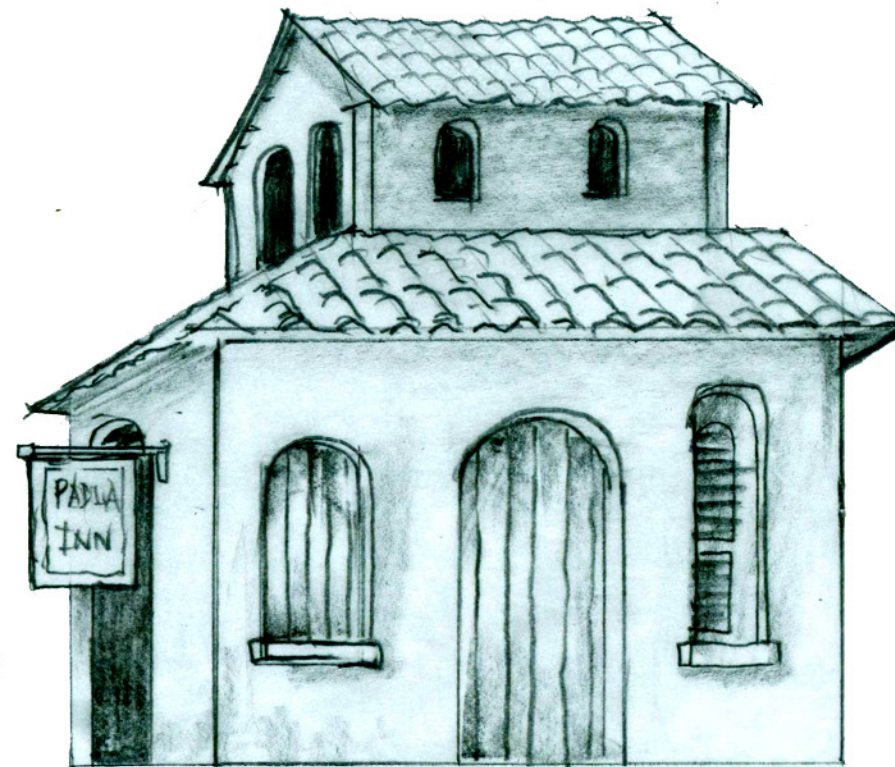
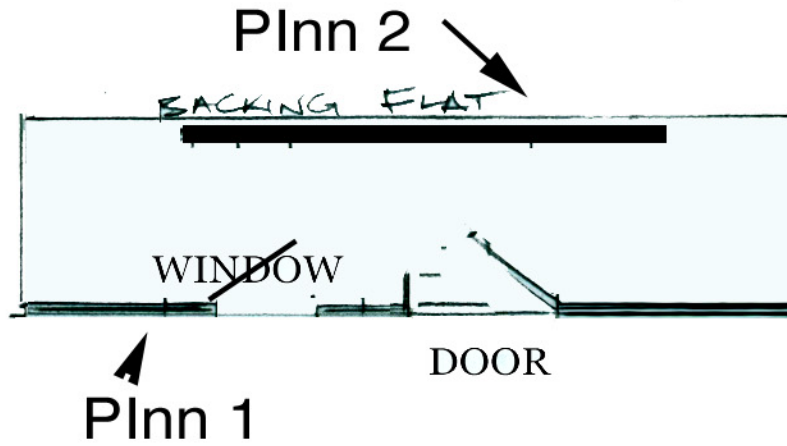


FOUNTAIN

This is the fountain we used in Beauty & the Beast. I hope we still have it in stock. If not, I have the drafting for it somewhere.

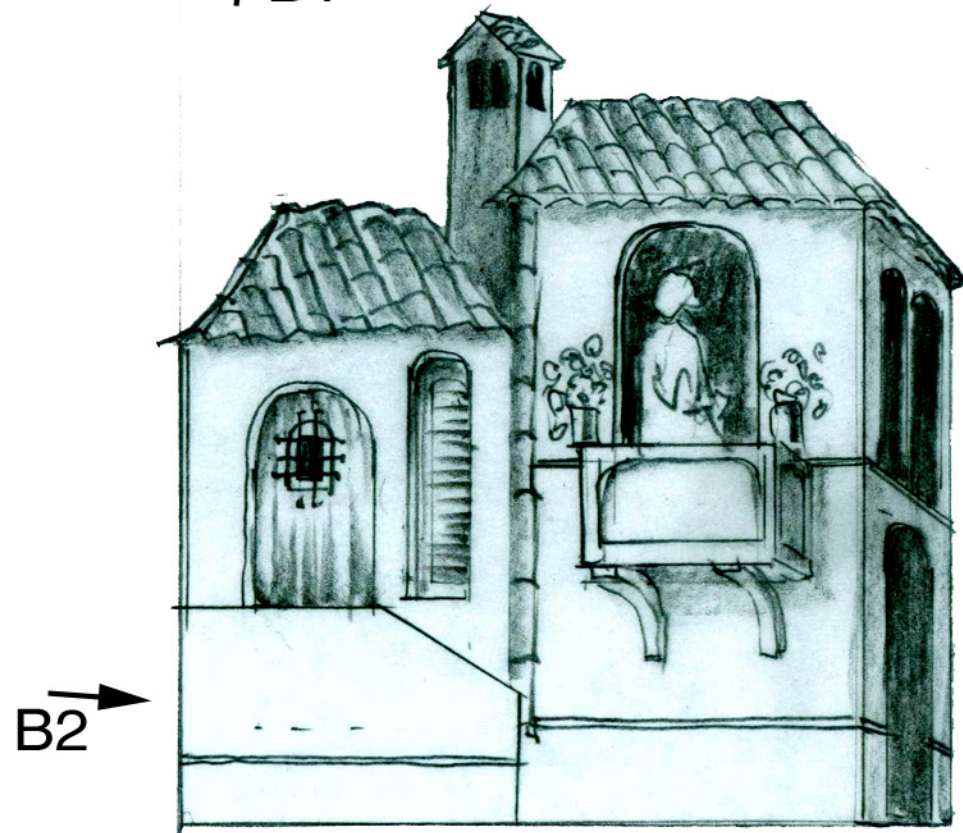
Danced upon. It needs to be pinned into the stage.

10' wide 9'-6" tall. Placement is important



PADUA INN

1/4" Scale



BAPTISTA'S

COMPOSITE VIEW.

B1 AND B2 ARE "plaster railings to the steps.

B3 is the prolife flat with a balcony opening & practical door.

Not shown is B4 Backing Flat ... placement is important to mask.