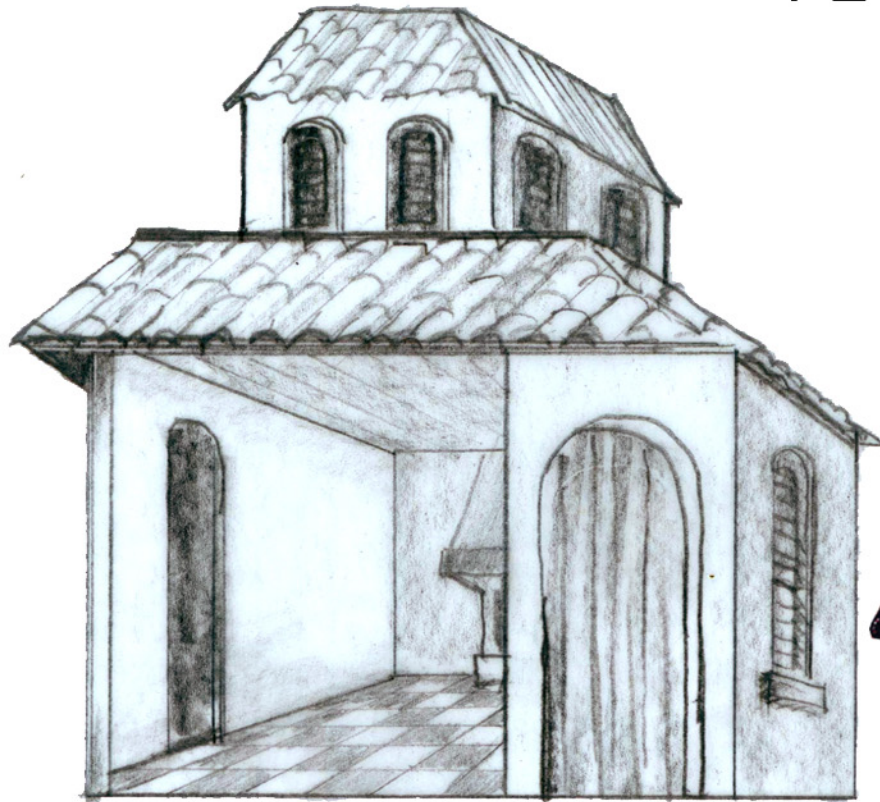


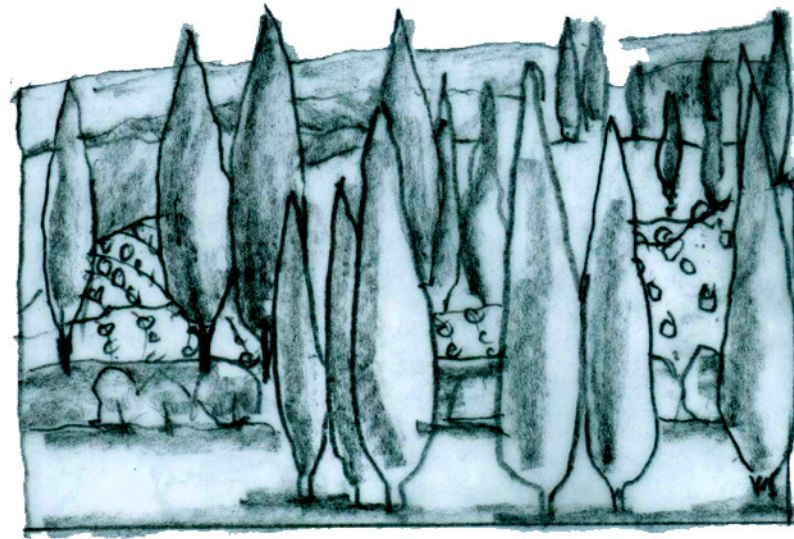
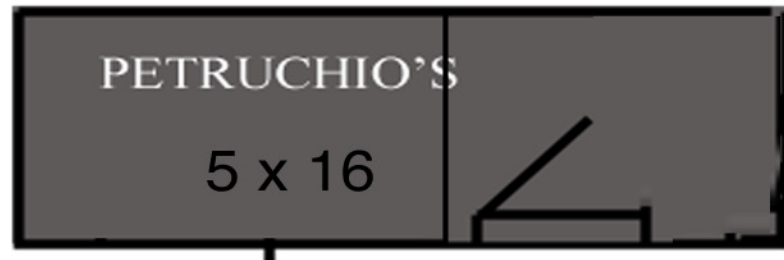
PETRUCHIO'S with COUNTRY BACKINGS

The profile flats are attached to the platforms a la MUNY 2x4 verticals. If possible, we should use vintage stagebraces to hold up the flats. We should not go out of the way with this, but having "theatrical sets" is the idea with the "Taming of the Shrew" scenery. DISCUSS

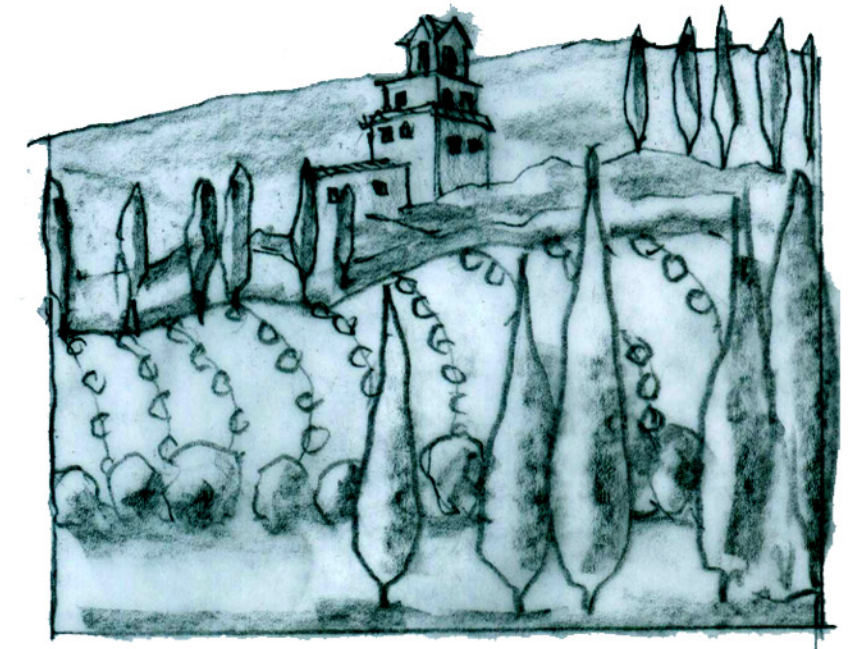
1/4" Scale



P 1



P2 SR



P3 SL

