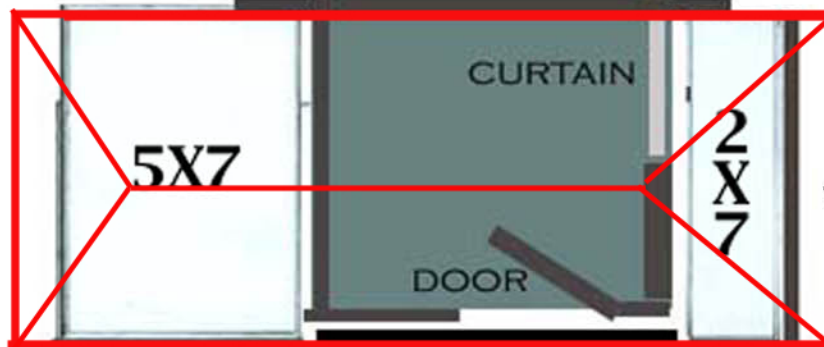


Each Side Dorm Unit needs to be moved by 3 IA Carps
Use Rental Scaffold with adjustable caster jacks. Connect the Baker's Scaffold with Standard 5x7 with rental corss supports. Discuss construction method for most efficient use of materials to guarantee 3 IA carps move.



Roof is a profile
Discuss



Harvard Yard 1/4" Scale



NOT SHOWN
DR1

DR1



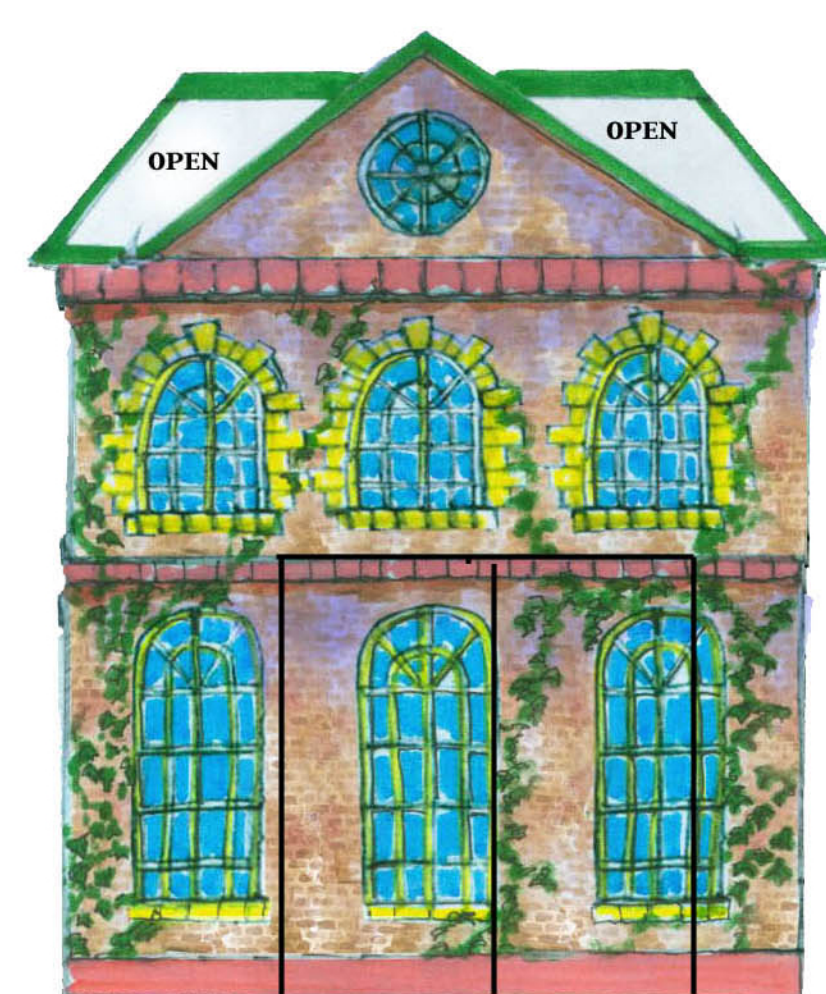
DR 3 DOUBLE DR2
COVERED



Gate Arch
+8"

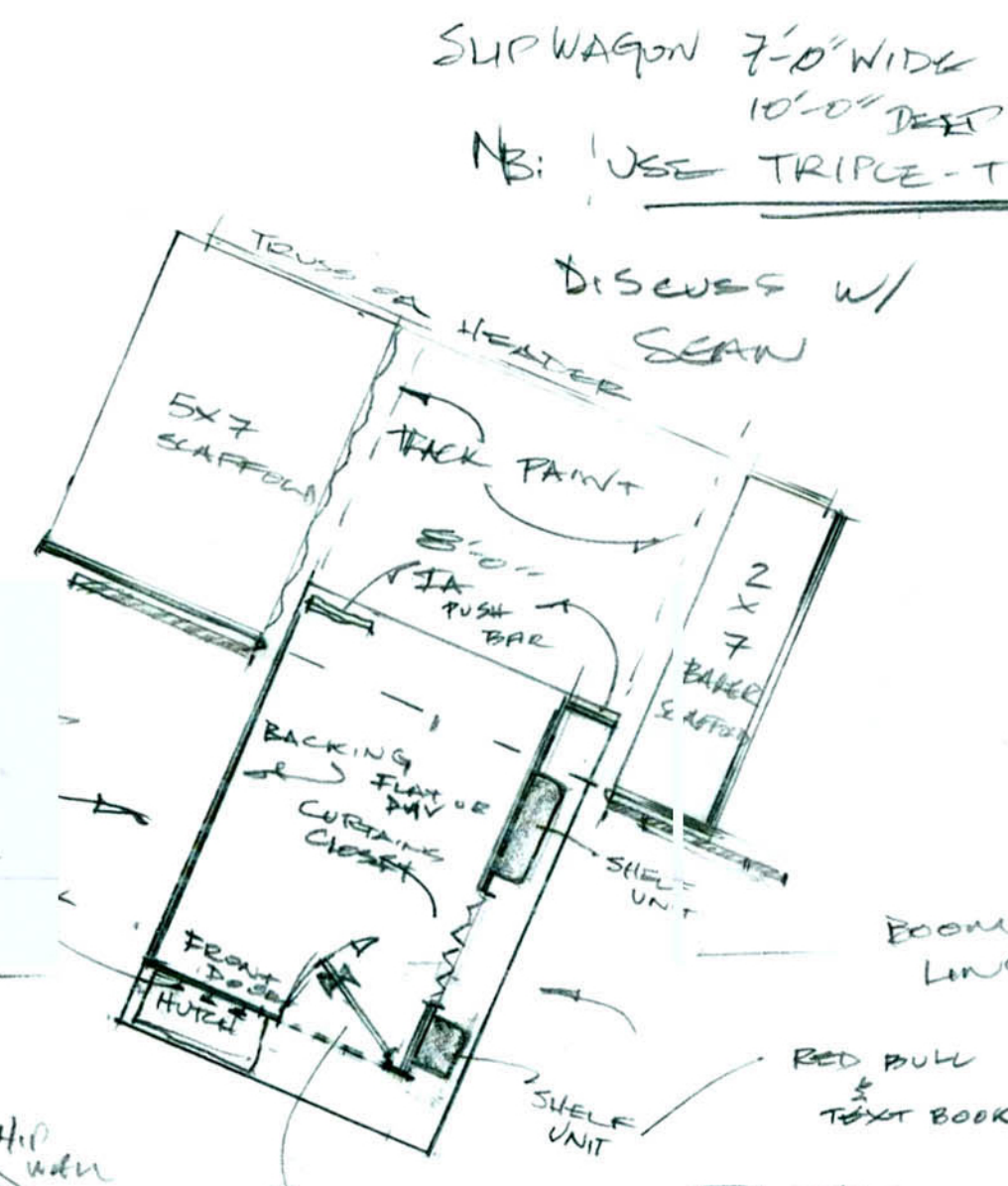


Gate needs to be moved by 2 IA Carps

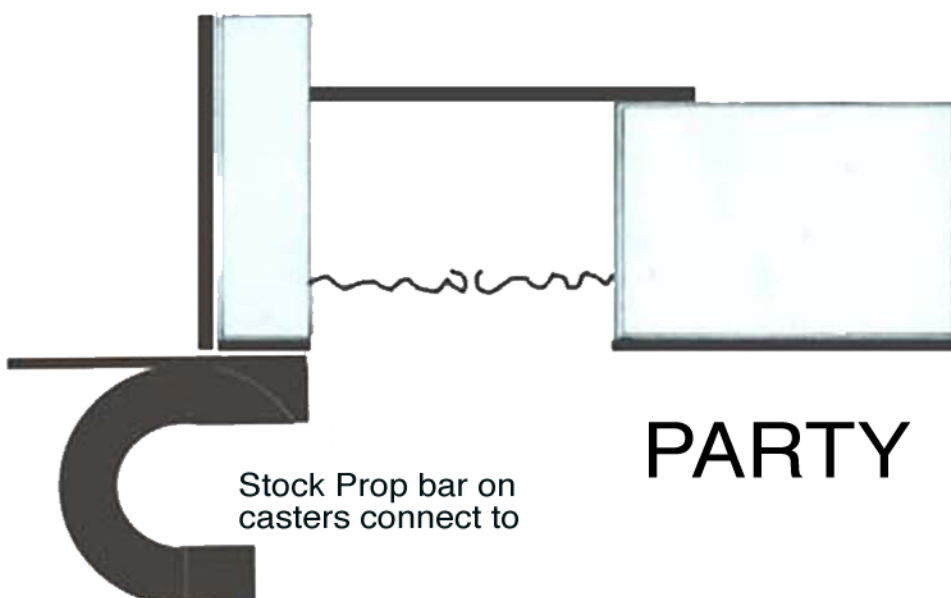


SR DORM BUILDING
NOT SHOW IS THE BUILDING
SIDE

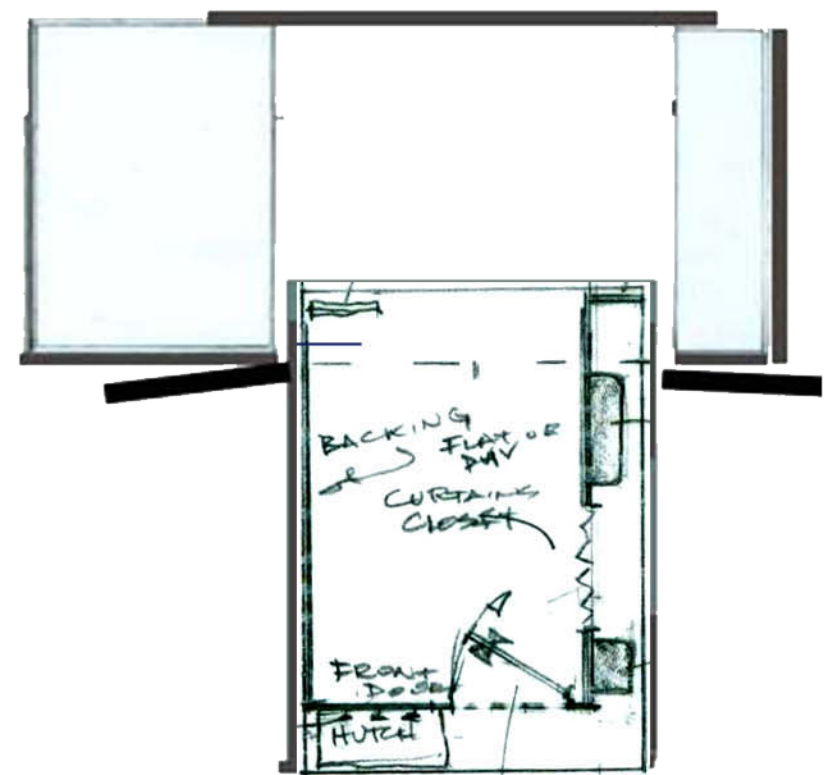
Barn Door Flippers



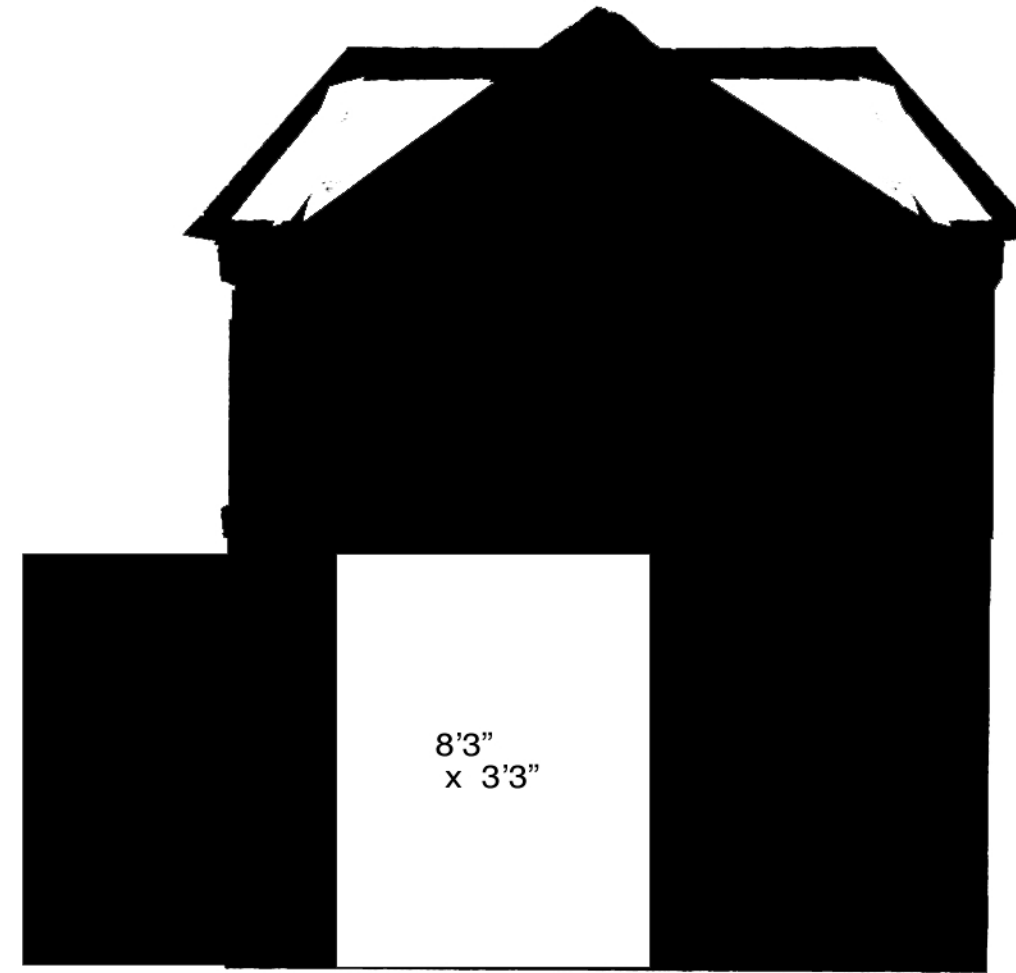
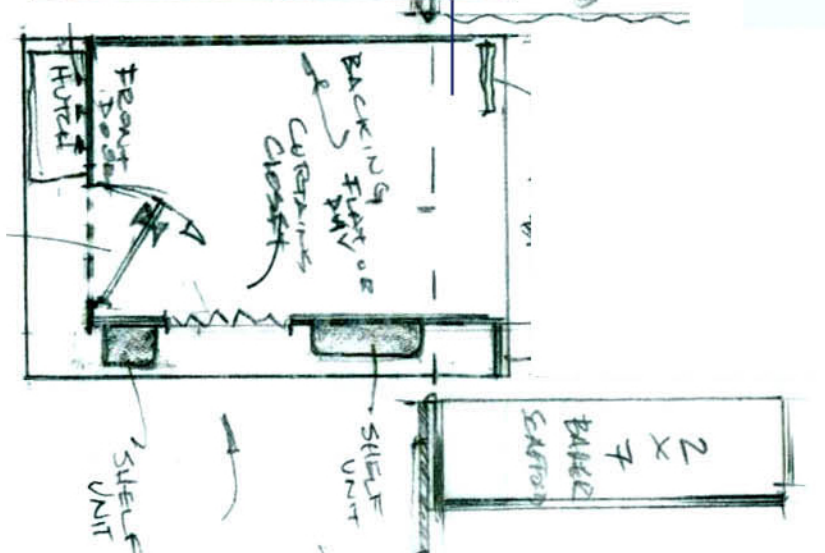
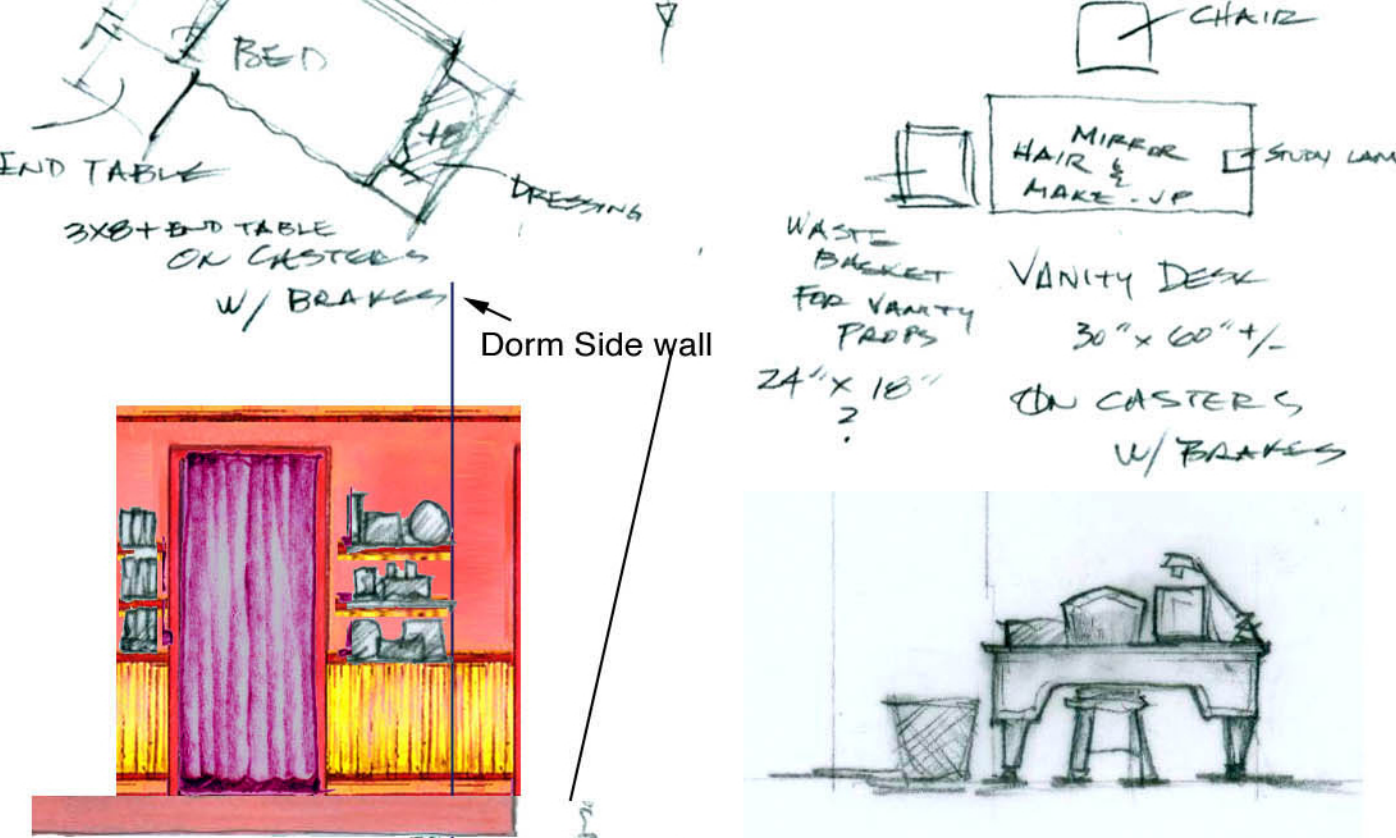
Attach DR 3 Flipper to Stock Bar
counter. Hinge unit to scaffold creating
a jack knife unit. Hook and eye flipper.



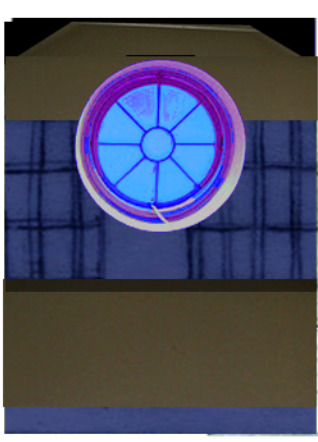
PARTY



Double Covered
Flippers ELLE'S
APARTMENT SIDE



8'3" x 3'3"



DR 3

paint



Curtain

